



briccola

*"Venezia
ai tuoi piedi"*



The Beginning of Venetian Civilization

Venezia and the lagoon that overlooks the city, is surrounded by islands and quaint villages. The history of this region started in Prehistoric Times, when man started settlements in this arid territory filled with natural resources suitable for farming, fishing and hunting. During this era, men developed a symbiotic relationship with water, building a sustainable foundation for their boats and homes. The palafitte is the founding bond of this relationship within the lagoon area, while furthermore encouraging the development of Venetian civilization. Today, after a millennium, the lagoon backdrops look like an immense "forest", formed by long oak and larch poles, which are protruding in the water to form a more solid foundation called "caranto". An unique underwater environment is perfectly exemplified by the famous "briccole", a group of three poles along the lagoon outlining the navigable areas, while simultaneously providing a range of information to mariners.





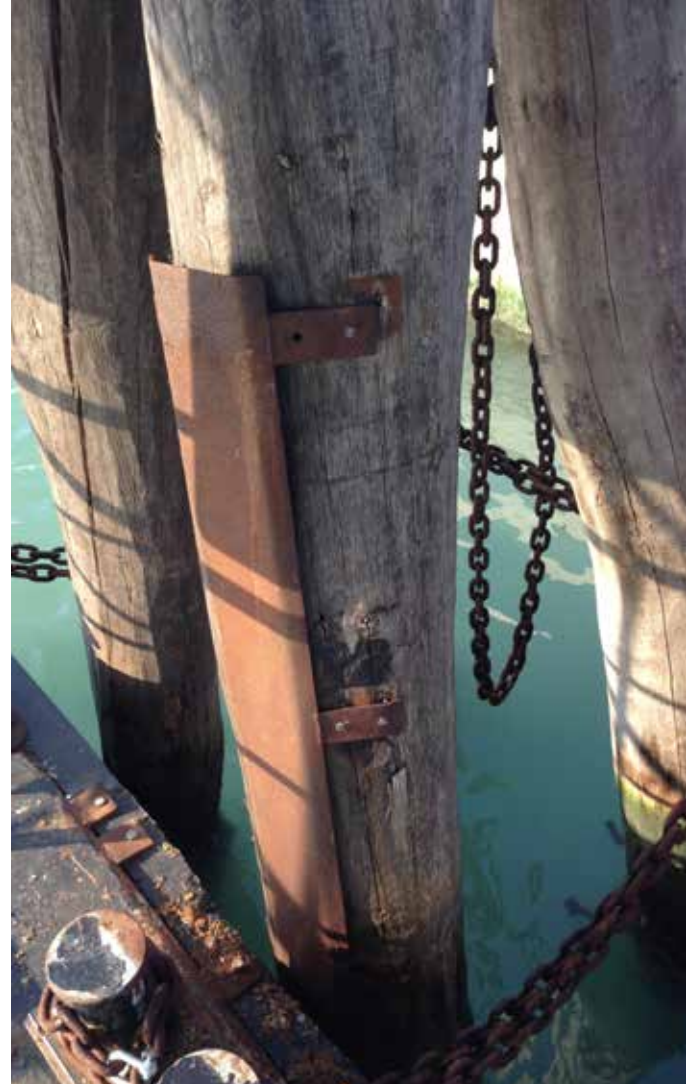
The “Briccole”

The “briccole” regulate the marine traffic of islands and canals throughout the entire Venetian lagoon system. These pillars (also known as “Duc D’Albe”, “Dalben”, “Dolphin”) are formed from a set of three poles submerged in the ground providing a range of information to sailors regarding the depth of the seabed, and the changing of the tides. Furthermore, the lagoon has a water depth boundary ranging between 60.000 and 90.000 of these briccole. The material is made of European Oak, with an average length of 10/15 meters with a diameter between 35 and 50 cm. For several years the “briccole” are made of wood from France and Germany, and other countries with certified forests FSC and PEFC, whose wood mass is constantly growing. Over the course of use, these poles need to be replaced to avoid becoming a danger for safe navigation.



Brocanelli, the Art of Recovery

Brocanelli deals with the recovery and enhancement of “bric-cole”. In the process of recovery, the composed oak, which is attached to shipworms and mollusks that feeds upon it, are soaked in brackish water. This process acquires extraordinary properties over the years, making it a marketable and desirable product to the most important designers worldwide. The value of this material goes far beyond its physical composition; the recovered material from the water is a piece of history. Furthermore, through a meticulous artisan virtuosity process, Brocanelli recover both horizontal and vertical surfaces which are enhanced by the beauty and magic of this extraordinary place.





Season after season, year after year, imprints on “briccola” document the flow of life.



The “cavàna”, a shelter for boats, covered with straw and built on stilts upon wooden poles are Venician landmarks unique to the entire lagoon. The typical function is referred to as mooring, which provides protection of the boats with sheets and key lock access.



La “teredine”

The “briccole” have a far worse enemy of time called la “teredine” (Teredos Navalis) also known as the marine worm. This worm is a mollusk that lives in brackish waters and feeds on wood. Since ancient times this has been the terror of all sailors, as in a short time it destroys port facilities and boats hulls. Unexpectedly the “teredine” attacks make the “briccole” appreciated by the best designers of the world, as they are a perfect product for exclusive wooden floors.



Only 10% and 20% of the surface of the reclaimed poles make this a unique formidable raw material.





A Secured Origin

The replacement of “bricole” is regulated by the Water Magistrate, an institute of the infrastructure and Transport Ministry. Since 1907 the Water Magistrate is responsible for the management and protection of the lagoons. Through a public announcement, only pre approved companies can remove poles and install new mooring posts. With legal authorization of a judge, you are allowed to collect removed poles, that are submitted to a meticulous production process. Brocannelli has such authorization, and our company guarantees the authenticity and certification of the product origin.





Revealing the Hidden Beauty: The Production Process

Our method allows the complete reuse of all the reclaimed “briccole”, in the creation of flooring, paneling, doors, and furniture. Our commitment to the protection of the environment, throughout the reuse of an otherwise material destined for disposal, inspires our company’s desire to create objects of unique design. Each design is embellished by unique patterns dug into wood by mollusk that feed on them. The shipworms, the immersion in brockish water (which removes sugary and hemicelluloses parts of the woods), the residue of lignin and salt, all collectively give life to a uniqueness of the product, as it exalts its beauty and quality.

“Typical grooves created by the shipworm on the “briccola” of Venice”



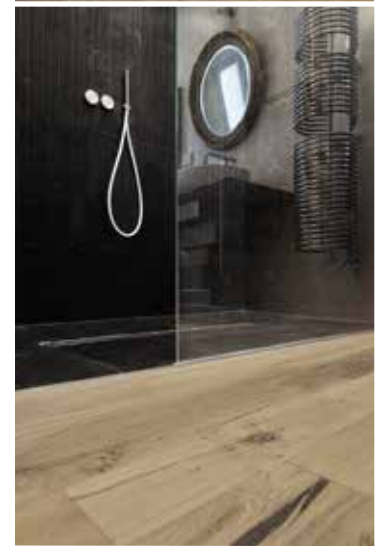
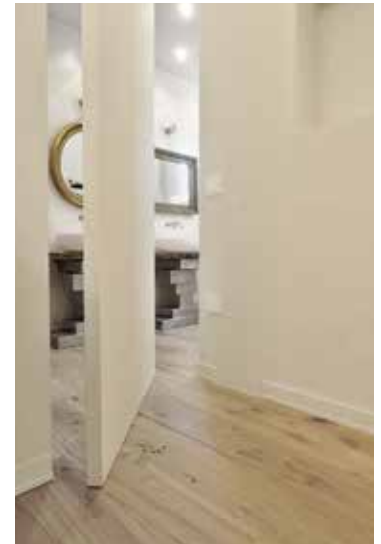
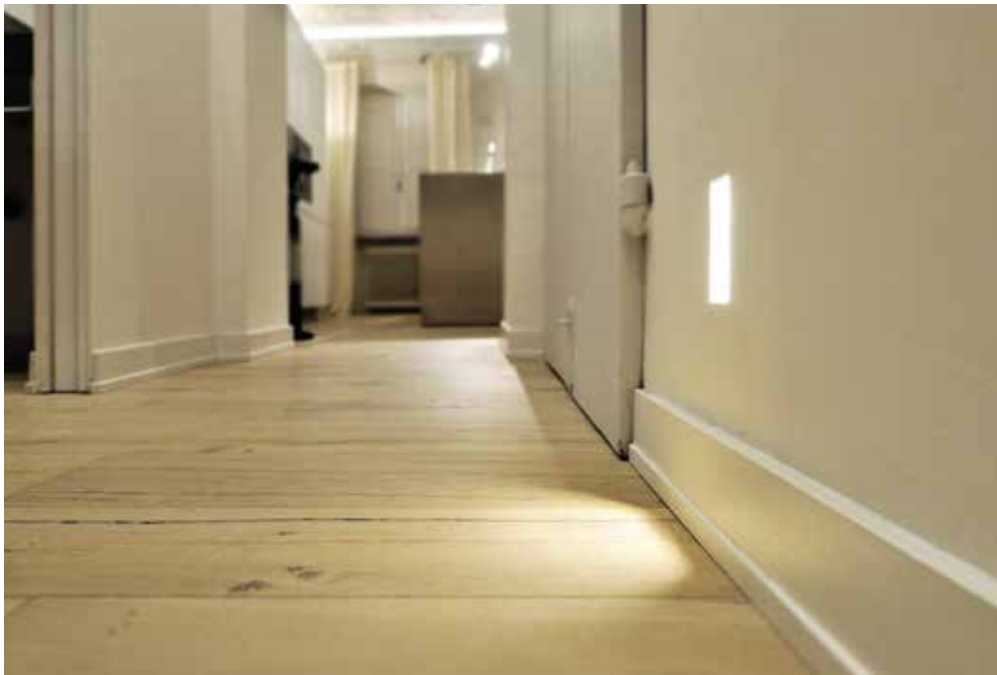


Refinement, Craftmanship and Tradition

Brocanelli carefully inspects every stage of production. First, we prepare the “briccole” to the later stages with careful removal of extraneous elements through the process of washing. Secondly, the poles are cut to obtain axes of various lengths and thicknesses that are suitable in the production process.

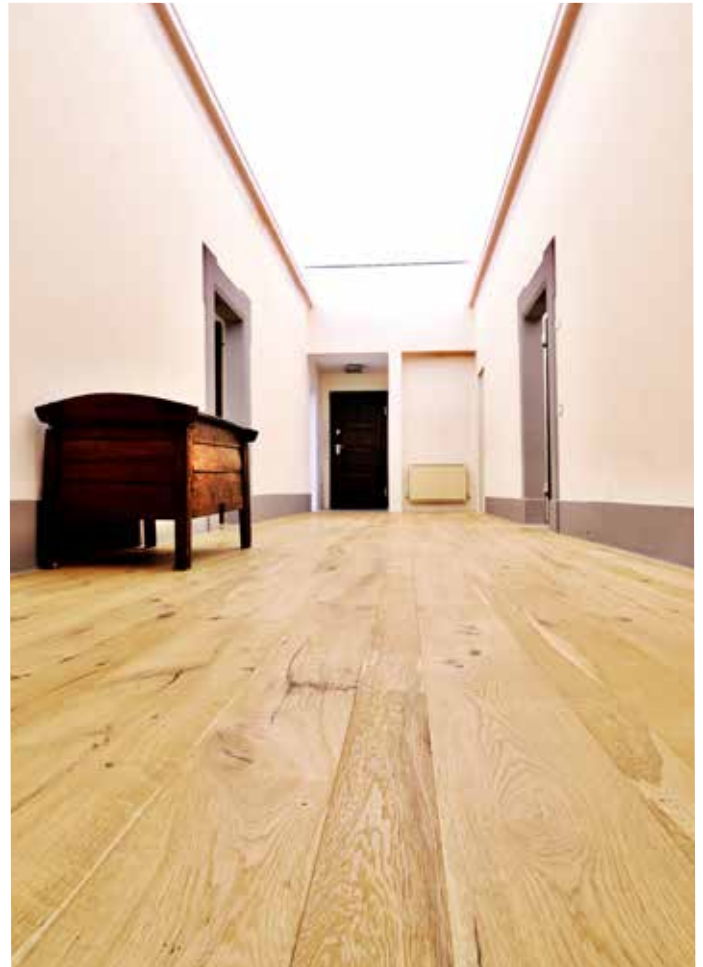
After the cut is made, Brocanelli proceeds with a drying technique. Our method maintains the quality enhancement that the immersion in brackish water gives the wood. This process guarantees us the ability to utilize the entire reclaimed “briccola.”

After being dried, our wood can be fabricated to assume any desired shape.





This extraordinary material does not limit creativity, but instead enhances its stability and refinement.












Certified Authenticity and Quality Guaranteed

Our work would not be possible without this authentic raw material. We guarantee the originality of our products, which retell the historic story of Venice and its lagoons.



Dimension and Technical Data

Spessore

A 5/6 mm	
B 10/11 mm	

Larghezze



Lunghezza



The Brocanelli “briccola” plank, is distinguished by its particular composition of three layers, each brushed layer is 6 mm in thickness. Each layer presents a flamed and striped grain, including irregular and shaded surfaces, medium to large knots, splits, distinguished black and gray signatures that testify the presence of heavy ironmongery which was used for connecting the poles.

The layer of “briccola”, once dried and calibrated, is pasted on a cross-layer Austrian fir, which gives the product a perfect balance while guaranteeing excellent stability. The uniqueness of the chamfering of the finished four sides displays the multiple widths of the planks, and enhances the strength of the floor boards. The adhesive used for the bonding of the layers is a vinyl – free formaldehyde glue which ensures the absence of harmful emissions. This glue guarantees an environmentally safe, coherent and responsible process for the development of the plank as a recycled material. Each plank is assembled with natural raw materials, and compatible with the strictest environmental sustainability rules.

By nature, the “briccola” wood recovery composition of three layers is a suitable floor product that can both be utilized in the context of green architecture, or in accordance with the Klima House certification protocol.





Brocanelli srl

60030 Serra De' conti (AN)
sede > Via Caffarelli, 1

T. +39 0731 879414

F. +39 0731 879777

www.brocanelli.com
info@brocanelli.com